

DATE: _____ CUSTOMER NAME: _____ PHONE: _____
 EMAIL: _____ WHEN DO YOU WANT TO PICK-UP? _____

Swift Series CABINETS

DOOR CLEARANCE CENTER TRUCKLOAD ORDER FORM

- Fully assembled!
- High quality melamine finish!
- Stain & scratch resistant!
- Truckload only - project cabinets
- Need in a hurry? Only 2 weeks!
- Minimum order: 250 cabinets

\$1,798!
10x10 SET



SW
SHAKER
WHITE

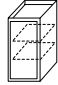


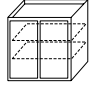
SG
SHAKER
LIGHT GRAY

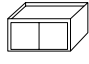


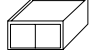
SS
SHAKER
SLATE

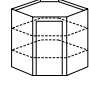


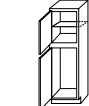
Wall Cabinet - 1 DOOR				Qty
	9" x 30"	#W930	A	\$88
	12" x 30"	#W1230	B	\$87
	15" x 30"	#W1530	C	\$102
	18" x 30"	#W1830	D	\$106
	21" x 30"	#W2130	E	\$119
	9" x 36"	#W936	WA	\$100
	12" x 36"	#W1236	WB	\$106
	15" x 36"	#W1536	WC	\$117
	18" x 36"	#W1836	WD	\$127
	21" x 36"	#W2136	WE	\$136
	9" x 42"	#W942	UA	\$109
	12" x 42"	#W1242	UB	\$116
	15" x 42"	#W1542	UC	\$129
	18" x 42"	#W1842	UD	\$143
	21" x 42"	#W2142	UE	\$154

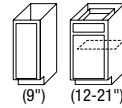
Wall Cabinet - 2 DOORS				Qty
	24" x 30"	#W2430	F	\$136
	30" x 30"	#W3030	H	\$156
	36" x 30"	#W3630	J	\$167
	24" x 36"	#W2436	WF	\$156
	30" x 36"	#W3036	WH	\$176
	36" x 36"	#W3636	WJ	\$196
	24" x 42"	#W2442	UF	\$180
	30" x 42"	#W3042	UH	\$197
	36" x 42"	#W3642	UJ	\$227

Wall Bridge Cabinet				Qty
	30" x 12"	#W3012	K	\$96
	36" x 12"	#W3612	L	\$104
	30" x 18"	#W3018	WK	\$112
	36" x 18"	#W3618	WL	\$123
	30" x 24"	#W3024	UK	\$133
	36" x 24"	#W3624	UL	\$152

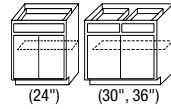
Refrigerator Wall Cabinet - 24" DEEP				Qty
	36" x 18"	#WR3618	UM	\$166
	36" x 24"	#WR3624	UN	\$201

Diagonal Wall Corner Cabinet				Qty
	24" x 30"	#DW2430	O	\$161
	24" x 36"	#DW2436	WO	\$187
	24" x 42"	#DW2442	UO	\$214

Tall Pantry Cabinet				Qty
	18" x 84"	#P1884	YH	\$369
	18" x 90"	#P1890	YL	\$386
	18" x 96"	#P1896	YM	\$401



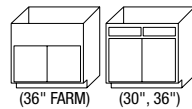
Base Cabinet - 1 DOOR				Qty
9"	#B9	P	\$132	*
12"	#B12	Q	\$140	
15"	#B15	R	\$143	*
18"	#B18	S	\$153	*
21"	#B21	T	\$169	



Base Cabinet - 2 DOORS				Qty
24"	#B24-2	U	\$213	
30"	#B30	W	\$239	
36"	#B36	X	\$268	



Drawer Base Cabinet				Qty
12"	#DB12	YJ	\$208	
15"	#DB15	YA	\$222	
18"	#DB18	YB	\$229	
24"	#DB24	YC	\$249	
30"	#DB30	YK	\$276	



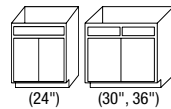
Sink Base Cabinet				Qty
30"	#SB30	YD	\$186	
36"	#SB36	YE	\$194	*
36" FARM	#SBF36	YN	\$197	



Blind Base Cabinet				Qty
45"-48"	#BBC42	YF	\$229	



Base Corner Cabinet - LAZY SUSAN				Qty
36"	#LS36	YG	\$349	*



Vanity Sink Base Cabinet				Qty
24" x 21"	#V2421	VB	\$165	
30" x 21"	#V3021	VC	\$180	
36" x 21"	#V3621	VD	\$192	



Vanity Sink Base Deluxe Cabinet				Qty
36" x 21"	#VSD3621	VE	\$256	



Vanity Drawer Base Cabinet				Qty
12" x 21"	#VDB1221	VA	\$198	

Accessories				Qty
3" x 30" Filler	#F330	ZA	\$8	
3" x 42" Filler	#F342	ZM	\$12	
6" x 30" Filler	#F630	ZB	\$17	
6" x 42" Filler	#F642	ZN	\$28	
3" x 96" Tall Filler	#F396	ZC	\$43	
8' Toe Kick	#TK8	ZD	\$13	
8' Scribe Moulding	#SM8	ZE	\$10	
8' Shoe Moulding	#SH8	ZF	\$15	
8' Crown Moulding	#CM8	ZG	\$83	
8' Outside Corner Moulding	#OCM8	ZH	\$24	
8' Inside Corner Moulding	#ICM8	ZJ	\$15	
3" Dishwasher End Panel	#DWR3	ZK	\$61	
2' x 8' Refrigerator Panel	#REP	ZO	\$109	
4' x 8' Island Panel	#IP8	ZL	\$106	

* INCLUDED IN \$1,798 10X10 SET