

DATE: \_\_\_\_\_ CUSTOMER NAME: \_\_\_\_\_ PHONE: \_\_\_\_\_  
 EMAIL: \_\_\_\_\_ WHEN DO YOU WANT TO PICK-UP? \_\_\_\_\_

**DOOR CLEARANCE CENTER**

# SAMSON Cabinet Order Form

- Unfinished - fully assembled
- All plywood, no particle board
- In stock in our warehouse
- 1/2" solid UV natural birch cabinets with 3/4" poplar face fronts
- Dado constructed with glue and staples
- Fully adjustable 3/4" UV natural birch shelves with fully laminated banding
- 1/2" fully banded UV natural birch drawer box with 1/4" bottom
- European concealed 3-way adjustable hinges
- Easy-glide 75-lb rated epoxy coated runners

**\$1,698!**  
**10x10 SET**



**UNFINISHED SHAKER**

Wall Cabinet - 1 DOOR	Qty
12" x 30" #W1230 <b>B</b> \$76	_____ *
15" x 30" #W1530 <b>C</b> \$81	_____
18" x 30" #W1830 <b>D</b> \$88	_____ **
21" x 30" #W2130 <b>E</b> \$94	_____
24" x 30" #W2430 \$106	_____
12" x 36" #W1236 <b>WB</b> \$94	_____
15" x 36" #W1536 <b>WC</b> \$100	_____
18" x 36" #W1836 <b>WD</b> \$116	_____
21" x 36" #W2136 <b>WE</b> \$131	_____
24" x 36" #W2436 \$144	_____

Base Cabinet - 1 DOOR	Qty
9" #B9 <b>P</b> \$89	_____ *
12" #B12 <b>Q</b> \$97	_____
15" #B15 <b>R</b> \$105	_____ *
18" #B18 <b>S</b> \$118	_____ *
21" #B21 <b>T</b> \$126	_____
24" #B24 \$164	_____

Base Cabinet - 2 DOORS	Qty
30" #B30 <b>W</b> \$197	_____
36" #B36 <b>X</b> \$211	_____

Wall Cabinet - 2 DOORS	Qty
30" x 30" #W3030 <b>H</b> \$131	_____
36" x 30" #W3630 <b>J</b> \$157	_____ *
30" x 36" #W3036 <b>WH</b> \$169	_____
36" x 36" #W3636 <b>WJ</b> \$194	_____

Drawer Base Cabinet	Qty
12" #DB12 <b>YJ</b> \$160	_____
15" #DB15 <b>YA</b> \$168	_____
18" #DB18 <b>YB</b> \$181	_____
24" #DB24 <b>YC</b> \$270	_____
30" #DB30 <b>YK</b> \$327	_____

Wall Bridge Cabinet	Qty
30" x 12" #W3012 <b>K</b> \$69	_____ *
36" x 12" #W3612 <b>L</b> \$82	_____ *
30" x 18" #W3018 <b>WK</b> \$81	_____
36" x 18" #W3618 <b>WL</b> \$94	_____
30" x 24" #W3024 <b>UK</b> \$106	_____

Sink Base Cabinet	Qty
30" #SB30 <b>YD</b> \$175	_____
36" #SB36 <b>YE</b> \$191	_____ *
36" FARM #SBF36 <b>YN</b> \$190	_____

**PREMIUM CABINETS!**

Refrigerator Wall Cabinet - 24" DEEP	Qty
36" x 18" #WR3618 <b>UM</b> \$140	_____

Base Corner Cabinet - LAZY SUSAN	Qty
36" #LS36 <b>YG</b> \$423	_____ *

Diagonal Wall Corner Cabinet	Qty
24" x 30" #DW2430 <b>O</b> \$212	_____ *
24" x 36" #DW2436 <b>WO</b> \$288	_____

Tall Pantry Cabinet - 24" DEEP	Qty
18" x 90" #P1890 <b>YL</b> \$369	_____

Vanity Sink Base Cabinet	Qty
24" x 21" #V2421 \$164	_____
30" x 21" #V3021 <b>VC</b> \$184	_____
36" x 21" #V3621 <b>VD</b> \$184	_____

Vanity Sink Base Deluxe Cabinet	Qty
36" x 21" #VSD3621 <b>VE</b> \$259	_____

Vanity Drawer Base Cabinet	Qty
12" x 21" #VDB1221 <b>VA</b> \$196	_____

Accessories	Qty
3" x 30" Filler #F330 <b>ZA</b> \$16	_____
3" x 36" Filler #F336 <b>ZM</b> \$20	_____
6" x 30" Filler #F630 <b>ZB</b> \$41	_____
6" x 36" Filler #F636 <b>ZN</b> \$46	_____
3" x 96" Tall Filler #F396 <b>ZC</b> \$65	_____
8' Toe Kick #TK8 <b>ZD</b> \$15	_____
8' Scribe Moulding #SM8 <b>ZE</b> \$34	_____
8' Shoe Moulding #SH8 <b>ZF</b> \$34	_____
8' Crown Moulding #CM8 <b>ZG</b> \$94	_____
8' Outside Corner Moulding #OCM8 <b>ZH</b> \$38	_____
8' Inside Corner Moulding #ICM8 <b>ZJ</b> \$68	_____
3" Dishwasher End Panel #DWR3 <b>ZK</b> \$44	_____
2' x 8' Refrigerator Panel #REP <b>ZO</b> \$196	_____
4' x 8' Island Panel #IP8 <b>ZL</b> \$99	_____

\* INCLUDED IN 10X10 SET

DATE: \_\_\_\_\_ CUSTOMER NAME: \_\_\_\_\_ PHONE: \_\_\_\_\_  
 EMAIL: \_\_\_\_\_ WHEN DO YOU WANT TO PICK-UP? \_\_\_\_\_

**DOOR CLEARANCE CENTER**

# SENTRY Cabinet Order Form

- Durable plywood cabinet boxes
- In stock in our warehouse, allow approx. 2-3 days to pull order
- RTA - ready to assemble
- Soft close doors & drawers
- Premium factory finish
- Full overlay

**\$2,138!**  
10x10 SET



**SHAKER WHITE**



**SHAKER GRAY**

Wall Cabinet – 1 DOOR				Qty
9" x 30"	#W930	<b>A</b>	\$114	
12" x 30"	#W1230	<b>B</b>	\$118	*
15" x 30"	#W1530	<b>C</b>	\$127	
18" x 30"	#W1830	<b>D</b>	\$136	**
21" x 30"	#W2130	<b>E</b>	\$144	
9" x 36"	#W936	<b>WA</b>	\$125	
12" x 36"	#W1236	<b>WB</b>	\$131	
15" x 36"	#W1536	<b>WC</b>	\$141	
18" x 36"	#W1836	<b>WD</b>	\$151	
21" x 36"	#W2136	<b>WE</b>	\$160	
9" x 42"	#W942	<b>UA</b>	\$134	
12" x 42"	#W1242	<b>UB</b>	\$141	
15" x 42"	#W1542	<b>UC</b>	\$153	
18" x 42"	#W1842	<b>UD</b>	\$167	
21" x 42"	#W2142	<b>UE</b>	\$177	

Wall Cabinet – 2 DOORS				Qty
24" x 30"	#W2430	<b>F</b>	\$160	
30" x 30"	#W3030	<b>H</b>	\$180	
36" x 30"	#W3630	<b>J</b>	\$196	*
24" x 36"	#W2436	<b>WF</b>	\$179	
30" x 36"	#W3036	<b>WH</b>	\$198	
36" x 36"	#W3636	<b>WJ</b>	\$218	
24" x 42"	#W2442	<b>UF</b>	\$202	
30" x 42"	#W3042	<b>UH</b>	\$218	
36" x 42"	#W3642	<b>UJ</b>	\$247	

Wall Bridge Cabinet				Qty
30" x 12"	#W3012	<b>K</b>	\$126	*
36" x 12"	#W3612	<b>L</b>	\$134	*
30" x 18"	#W3018	<b>WK</b>	\$137	
36" x 18"	#W3618	<b>WL</b>	\$148	
30" x 24"	#W3024	<b>UK</b>	\$158	
36" x 24"	#W3624	<b>UL</b>	\$175	

Refrigerator Wall Cabinet – 24" DEEP				Qty
36" x 18"	#WR3618	<b>UM</b>	\$189	
36" x 24"	#WR3624	<b>UN</b>	\$223	

Diagonal Wall Corner Cabinet				Qty
24" x 30"	#DW2430	<b>O</b>	\$189	*
24" x 36"	#DW2436	<b>WO</b>	\$209	
24" x 42"	#DW2442	<b>UO</b>	\$235	

Tall Pantry Cabinet				Qty
18" x 84"	#P1884	<b>YH</b>	\$384	
18" x 90"	#P1890	<b>YL</b>	\$400	
18" x 96"	#P1896	<b>YM</b>	\$415	

Base Cabinet – 1 DOOR				Qty
9"	#B9	<b>P</b>	\$161	*
12"	#B12	<b>Q</b>	\$164	
15"	#B15	<b>R</b>	\$171	*
18"	#B18	<b>S</b>	\$181	*
21"	#B21	<b>T</b>	\$191	

Base Cabinet – 2 DOORS				Qty
24"	#B24-2	<b>U</b>	\$234	
30"	#B30	<b>W</b>	\$259	
36"	#B36	<b>X</b>	\$287	

Drawer Base Cabinet				Qty
12"	#DB12	<b>YJ</b>	\$229	
15"	#DB15	<b>YA</b>	\$243	
18"	#DB18	<b>YB</b>	\$249	
24"	#DB24	<b>YC</b>	\$269	
30"	#DB30	<b>YK</b>	\$295	

Sink Base Cabinet				Qty
30"	#SB30	<b>YD</b>	\$208	
36"	#SB36	<b>YE</b>	\$220	*
36" FARM	#SBF36	<b>YN</b>	\$220	#

Blind Base Cabinet				Qty
45"-48"	#BBC42	<b>YF</b>	\$249	◇

Base Corner Cabinet – LAZY SUSAN				Qty
36"	#LS36	<b>YG</b>	\$370	*

Vanity Sink Base Cabinet				Qty
24" x 21"	#V2421	<b>VB</b>	\$188	
30" x 21"	#V3021	<b>VC</b>	\$202	
36" x 21"	#V3621	<b>VD</b>	\$213	

Vanity Sink Base Deluxe Cabinet				Qty
36" x 21"	#VSD3621	<b>VE</b>	\$276	

Vanity Drawer Base Cabinet				Qty
12" x 21"	#VDB1221	<b>VA</b>	\$220	

Accessories				Qty
3" x 30" Filler	#F330	<b>ZA</b>	\$8	
3" x 42" Filler	#F342	<b>ZM</b>	\$12	
6" x 30" Filler	#F630	<b>ZB</b>	\$17	
6" x 42" Filler	#F642	<b>ZN</b>	\$28	
3" x 96" Tall Filler	#F396	<b>ZC</b>	\$43	
8' Toe Kick	#TK8	<b>ZD</b>	\$13	
8' Scribe Moulding	#SM8	<b>ZE</b>	\$10	
8' Shoe Moulding	#SH8	<b>ZF</b>	\$15	
8' Crown Moulding	#CM8	<b>ZG</b>	\$83	
8' Outside Corner Moulding	#OCM8	<b>ZH</b>	\$24	
8' Inside Corner Moulding	#ICM8	<b>ZJ</b>	\$15	
3" Dishwasher End Panel	#DWR3	<b>ZK</b>	\$61	
2' x 8' Refrigerator Panel	#REP	<b>ZO</b>	\$109	
4' x 8' Island Panel	#IP8	<b>ZL</b>	\$106	

\* Only available in Shaker White.

◇ Reversible 42" wide cabinet. Install 3"-6" away from wall for a 45"-48" wide space.

DATE: \_\_\_\_\_ CUSTOMER NAME: \_\_\_\_\_ PHONE: \_\_\_\_\_  
 EMAIL: \_\_\_\_\_ WHEN DO YOU WANT TO PICK-UP? \_\_\_\_\_

**DOOR CLEARANCE CENTER**

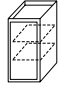
# SENTRY Cabinet Order Form

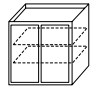
- Durable plywood cabinet boxes
- In stock in our warehouse, allow approx. 2-3 days to pull order
- RTA - ready to assemble
- Soft close doors & drawers
- Premium factory finish
- Full overlay & raised panel

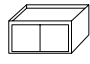
**\$2,398!**  
10x10 SET

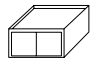


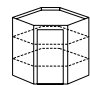
**DARK WALNUT**

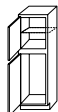
Wall Cabinet - 1 DOOR				Qty
	12" x 30"	#W1230	<b>B</b> \$128	*
	15" x 30"	#W1530	<b>C</b> \$141	
	18" x 30"	#W1830	<b>D</b> \$149	**
	21" x 30"	#W2130	<b>E</b> \$161	
	12" x 36"	#W1236	<b>WB</b> \$146	
	15" x 36"	#W1536	<b>WC</b> \$158	
	18" x 36"	#W1836	<b>WD</b> \$170	
	21" x 36"	#W2136	<b>WE</b> \$181	
	12" x 42"	#W1242	<b>UB</b> \$157	
	15" x 42"	#W1542	<b>UC</b> \$172	
	18" x 42"	#W1842	<b>UD</b> \$188	
	21" x 42"	#W2142	<b>UE</b> \$201	

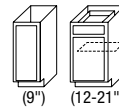
Wall Cabinet - 2 DOORS				Qty
	24" x 30"	#W2430	<b>F</b> \$180	
	30" x 30"	#W3030	<b>H</b> \$204	
	36" x 30"	#W3630	<b>J</b> \$219	*
	24" x 36"	#W2436	<b>WF</b> \$203	
	30" x 36"	#W3036	<b>WH</b> \$227	
	36" x 36"	#W3636	<b>WJ</b> \$249	
	24" x 42"	#W2442	<b>UF</b> \$231	
	30" x 42"	#W3042	<b>UH</b> \$250	
	36" x 42"	#W3642	<b>UJ</b> \$285	

Wall Bridge Cabinet				Qty
	30" x 12"	#W3012	<b>K</b> \$137	*
	36" x 12"	#W3612	<b>L</b> \$147	*
	30" x 18"	#W3018	<b>WK</b> \$153	
	36" x 18"	#W3618	<b>WL</b> \$165	
	30" x 24"	#W3024	<b>UK</b> \$177	
	36" x 24"	#W3624	<b>UL</b> \$198	

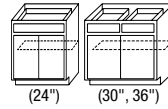
Refrigerator Wall Cabinet - 24" DEEP				Qty
	36" x 18"	#WR3618	<b>UM</b> \$215	
	36" x 24"	#WR3624	<b>UN</b> \$256	

Diagonal Wall Corner Cabinet				Qty
	24" x 30"	#DW2430	<b>O</b> \$213	*
	24" x 36"	#DW2436	<b>WO</b> \$239	
	24" x 42"	#DW2442	<b>UO</b> \$270	

Tall Pantry Cabinet				Qty
	18" x 84"	#P1884	<b>YH</b> \$449	
	18" x 90"	#P1890	<b>YL</b> \$469	
	18" x 96"	#P1896	<b>YM</b> \$486	



Base Cabinet - 1 DOOR				Qty
9"	#B9	<b>P</b>	\$180	*
12"	#B12	<b>Q</b>	\$185	
15"	#B15	<b>R</b>	\$192	*
18"	#B18	<b>S</b>	\$202	*
21"	#B21	<b>T</b>	\$218	



Base Cabinet - 2 DOORS				Qty
24"	#B24-2	<b>U</b>	\$269	
30"	#B30	<b>W</b>	\$300	
36"	#B36	<b>X</b>	\$332	



Drawer Base Cabinet				Qty
12"	#DB12	<b>YJ</b>	\$263	
15"	#DB15	<b>YA</b>	\$280	
18"	#DB18	<b>YB</b>	\$287	
24"	#DB24	<b>YC</b>	\$311	
30"	#DB30	<b>YK</b>	\$342	



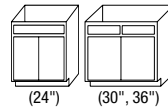
Sink Base Cabinet				Qty
36"	#SB36	<b>YE</b>	\$250	*



Blind Base Cabinet				Qty
45"-48"	#BBC42	<b>YF</b>	\$288	◇



Base Corner Cabinet - LAZY SUSAN				Qty
36"	#LS36	<b>YG</b>	\$432	*



Vanity Sink Base Cabinet				Qty
24" x 21"	#V2421	<b>VB</b>	\$214	
30" x 21"	#V3021	<b>VC</b>	\$231	
36" x 21"	#V3621	<b>VD</b>	\$245	



Vanity Sink Base Deluxe Cabinet				Qty
36" x 21"	#VSD3621	<b>VE</b>	\$319	



Vanity Drawer Base Cabinet				Qty
12" x 21"	#VDB1221	<b>VA</b>	\$252	

**Accessories**

3" x 30" Filler	#F330	<b>ZA</b>	\$8	
3" x 42" Filler	#F342	<b>ZM</b>	\$12	
6" x 30" Filler	#F630	<b>ZB</b>	\$17	
6" x 42" Filler	#F642	<b>ZN</b>	\$28	
3" x 96" Tall Filler	#F396	<b>ZC</b>	\$43	
8' Toe Kick	#TK8	<b>ZD</b>	\$13	
8' Scribe Moulding	#SM8	<b>ZE</b>	\$10	
8' Shoe Moulding	#SH8	<b>ZF</b>	\$15	
8' Crown Moulding	#CM8	<b>ZG</b>	\$83	
8' Outside Corner Moulding	#OCM8	<b>ZH</b>	\$24	
8' Inside Corner Moulding	#ICM8	<b>ZJ</b>	\$15	
3" Dishwasher End Panel	#DWR3	<b>ZK</b>	\$61	
2' x 8' Refrigerator Panel	#REP	<b>ZO</b>	\$109	
4' x 8' Island Panel	#IP8	<b>ZL</b>	\$106	

◇ Reversible 42" wide cabinet. Install 3"-6" away from wall for a 45"-48" wide space.

# CABINET ACCESSORIES

1	<input type="checkbox"/> Double Trash (35 qt trash can) Pull-Out for 18" Base	\$69.98
2	<input type="checkbox"/> Single Trash (35 qt trash can) Pull-Out for 15"-18" Base	\$42.98
3	<input type="checkbox"/> Trash Can (35 qt)	\$14.99
4	<input type="checkbox"/> Door Mount Kit (Option for Trash Pull-Out)	\$14.98
5	<input type="checkbox"/> Shelf Pull-Out for 15"-18" Base	\$39.98
6	<input type="checkbox"/> Cutlery Drawer Insert 15"-21"	\$44.98
7	<input type="checkbox"/> Spice Rack for 15"-18" Wall	\$22.98
8	<input type="checkbox"/> Pull-Out Spice Rack	\$199.00
9	<input type="checkbox"/> Cabinet Hardware Pull/Knobs (Special Order)	\$2.99 & Up
10	<input type="checkbox"/> Cabinet Bar Pull 10-Pack	\$29.99
11	<input type="checkbox"/> Shims	\$1.99 & \$5.99
12	<input type="checkbox"/> Inflatable Air Shims - 2 Pack	\$34.98

*Need a New Door?*

 **DOOR CLEARANCE CENTER**

**YOUR #1 SOURCE FOR DOORS**

- **HUNDREDS OF DOORS IN STOCK!**
- **LOCKSETS & HANDLES TOO!**
- **SAVE 30-70%!**
- **KEYLESS ENTRY!**