

DATE: \_\_\_\_\_ CUSTOMER NAME: \_\_\_\_\_ PHONE: \_\_\_\_\_  
 EMAIL: \_\_\_\_\_ WHEN DO YOU WANT TO PICK-UP? \_\_\_\_\_

**DOOR CLEARANCE CENTER**

**BRADLEY Cabinet Order Form**

- Frameless cabinet case
- Scratch resistant TSS melamine slab doors
- 3/4" 11-ply birch plywood case and shelves
- Natural maple wrap prevents stains and assists with waterproofing
- Soft-close hinges and drawers
- Solid wood drawers with dovetail assembly
- RTA - ready to assemble
- Get it fast! Allow approx. 2 weeks

**\$2,498!**  
**10x10 SET**



GRAY BIRCH  
GB



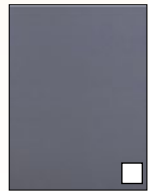
WEATHERED ASPEN  
WA



WEATHERED OAK  
WO



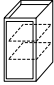
ANTIQUE WALNUT  
AW

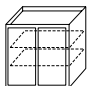


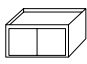
BRILLO GRAY  
BG

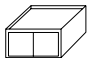



RAIN CHERRY  
RC

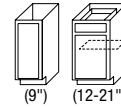
Wall Cabinet – 1 DOOR			Qty
	9" x 30"	#W0930	\$124
	12" x 30"	#W1230	\$113
	15" x 30"	#W1530	\$153
	18" x 30"	#W1830	\$148
	21" x 30"	#W2130	\$194
	9" x 36"	#W936	\$136
	12" x 36"	#W1236	\$152
	15" x 36"	#W1536	\$174
	18" x 36"	#W1836	\$199
	21" x 36"	#W2136	\$220
	9" x 42"	#W0942	\$151
	12" x 42"	#W1242	\$173
	15" x 42"	#W1542	\$197
	18" x 42"	#W1842	\$222
	21" x 42"	#W2142	\$246

Wall Cabinet – 2 DOORS			Qty
	24" x 30"	#W2430	\$220
	30" x 30"	#W3030	\$259
	36" x 30"	#W3630	\$251
	24" x 36"	#W2436	\$261
	30" x 36"	#W3036	\$306
	36" x 36"	#W3636	\$353
	24" x 42"	#W2442	\$299
	30" x 42"	#W3042	\$348
	36" x 42"	#W3642	\$396

Wall Bridge Cabinet			Qty
	30" x 12"	#W3012	\$119
	36" x 12"	#W3612	\$134
	30" x 18"	#W3018	\$166
	36" x 18"	#W3618	\$195
	30" x 24"	#W3024	\$219
	36" x 24"	#W3624	\$231

Refrigerator Wall Cabinet – 24" DEEP			Qty
	36" x 18"	#W361824	\$320
	36" x 24"	#W362424	\$421

Wall Corner Cabinet			Qty
	24" x 30"	#WDC2430/WER2430 <sup>◇</sup>	\$251
	24" x 36"	#WDC2436/WER2436 <sup>◇</sup>	\$360
	24" x 42"	#WDC2442/WER2442 <sup>◇</sup>	\$420



Base Cabinet – 1 DOOR			Qty
9"	#BF09	\$165	*
12"	#B12	\$234	
15"	#B15	\$214	*
18"	#B18	\$230	*
21"	#B21	\$292	



Base Cabinet – 2 DOORS			Qty
24"	#B24	\$338	
30"	#B30	\$389	
36"	#B36	\$441	



Drawer Base Cabinet			Qty
12"	#DB12	\$407	
15"	#DB15	\$415	
18"	#DB18	\$433	
24"	#DB24	\$484	
30"	#DB30	\$497	



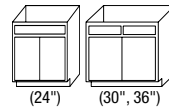
Sink Base Cabinet			Qty
30"	#SB30	\$264	
36"	#SB36	\$241	*



Blind Base Cabinet			Qty
42"-45"	#BBC39	\$447	



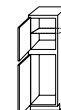
Base Corner Cabinet – LAZY SUSAN			Qty
36"	#LS36	\$485	*



Vanity Sink Base Cabinet			Qty
24" x 21"	#V2421	\$265	
30" x 21"	#V3021	\$309	
36" x 21"	#V3621	\$371	



Vanity Drawer Base Cabinet			Qty
12" x 21"	#VDB1221	\$383	



Tall Pantry Cabinet			Qty
18" x 84"	#WP1884	\$570	
18" x 90"	#WP1890	\$615	
18" x 96"	#WP1896	\$663	

Accessories			Qty
3" Wall Filler	#WF330/336/342	\$15	
6" Wall Filler	#WF630/636/642	\$30	
3" Tall Filler	#TF384/390/396	\$62	
3" Base Filler	#BF3	\$14	
6" Base Filler	#BF6	\$28	
Wall End Panel (3/4")	#WEP30/36/42	\$26	
Base End Panel (3/4")	#BEP	\$45	
Tall End Panel (3/4")	#TEP2484/2490/2496	\$150	
Dishwasher End Panel	#DEP3	\$69	
Island Panel (48"x96"x3/4")	#PNL4896	\$179	
8' Toe Kick	#TK8	\$24	
8' Scribe Moulding	#SM8	\$14	
8' Crown Moulding	#CM8	\$62	
8' Outside Corner Moulding	#OM8	\$24	

<sup>◇</sup>WO, GB, WA are WDC. RC, AW & BG are WER.

\* INCLUDED IN \$2,498 10X10 SET

# CABINET ACCESSORIES

1	<input type="checkbox"/> Double Trash (35 qt trash can) Pull-Out for 18" Base	\$69.98
2	<input type="checkbox"/> Single Trash (35 qt trash can) Pull-Out for 15"-18" Base	\$42.98
3	<input type="checkbox"/> Trash Can (35 qt)	\$14.99
4	<input type="checkbox"/> Door Mount Kit (Option for Trash Pull-Out)	\$14.98
5	<input type="checkbox"/> Shelf Pull-Out for 15"-18" Base	\$39.98
6	<input type="checkbox"/> Cutlery Drawer Insert 15"-21"	\$44.98
7	<input type="checkbox"/> Spice Rack for 15"-18" Wall	\$22.98
8	<input type="checkbox"/> Pull-Out Spice Rack	\$199.00
9	<input type="checkbox"/> Cabinet Hardware Pull/Knobs (Special Order)	\$2.99 & Up
10	<input type="checkbox"/> Cabinet Bar Pull 10-Pack	\$29.99
11	<input type="checkbox"/> Shims	\$1.99 & \$5.99
12	<input type="checkbox"/> Inflatable Air Shims - 2 Pack	\$34.98

*Need a New Door?*

 **DOOR CLEARANCE CENTER**

**YOUR #1 SOURCE FOR DOORS**

- **HUNDREDS OF DOORS IN STOCK!**
- **LOCKSETS & HANDLES TOO!**
- **SAVE 30-70%!**
- **KEYLESS ENTRY!**